

Field Choice	Auto Create at Task Level	Help text
Online Assignment (Individual)	ASSIGNMENT	Individual assignments submitted in Blackboard (non-media files up to 250MB or media uploads up to 2GB). Sets up an individual submission point and Grade Centre Column automatically in Blackboard.
Online Assignment (Group)	ASSIGNMENT	Group assignments submitted in Blackboard (non-media files up to 250MB or media uploads up to 2GB). Sets up an individual submission point and Grade Centre Column automatically in Blackboard (which can be manually adjusted to a group submission if required as student groups are allocated).
Online Test/Exam (in Blackboard)	Nothing Created	Tests set up within Blackboard. No automatic Blackboard set-up as a Grade Centre Column will be generated when the test is created by the instructor.
Online Test/Exam (electronic, not in Blackboard)	MANUAL_COLUMN	Tests carried out online or electronically outside of Blackboard. No submission point created - only a Grade Centre Column will be set up in Blackboard.
Non-electronic Test/Exam	MANUAL_COLUMN	A test carried out via non-electronic means. No submission point created - only a Grade Centre Column will be set up in Blackboard
Online Other (in Blackboard)	Nothing created	A Blog, Wiki, Journal, Portfolio or PebblePad set-up within Blackboard. No automatic Blackboard set-up as a Grade Centre Column will be generated when these items are created by the instructor.
Online Other (not in Blackboard)	MANUAL_COLUMN	Assignments involving large files submitted by means other than Blackboard (non-media files over 250MB or media uploads exceeding 2GB) or portfolios not using Blackboard tools/PebblePad. No submission point created - only a Grade Centre Column will be set up in Blackboard.
Non-electronic Assignment (Indvl: with BB Receipt)	OFFLINE_ASSIGNMENT	Individual assignments submitted physically (in class or to helpdesks) for which a Blackboard receipt is required. An individual offline submission point will be created along with a Grade Centre Column.
Non-electronic Assignment (Group: with BB receipt)	OFFLINE_ASSIGNMENT	Group assignments submitted physically (in class or to helpdesks) for which a Blackboard receipt is required. An individual offline submission point will be created along with a Grade Centre Column (which can be manually adjusted to a group submission if required as student groups are allocated).
Non-electronic Assignment (Indvl: no BB receipt)	MANUAL_COLUMN	Individual assignments submitted physically (in class or to helpdesks) for which a receipt is not required from Blackboard. No submission point created - only a Grade Centre Column will be set up in Blackboard
Non-electronic Assignment (Group: no BB receipt)	MANUAL_COLUMN	Group assignments submitted physically (in class or to helpdesks) for which a receipt is not required from Blackboard. No submission point created - only a Grade Centre Column will be set up in Blackboard
Task with subtasks	WEIGHTED_COLUMN	For a task with subtasks, no submission point created, but a weighted Grade Centre Column will be set up in Blackboard

Table 1

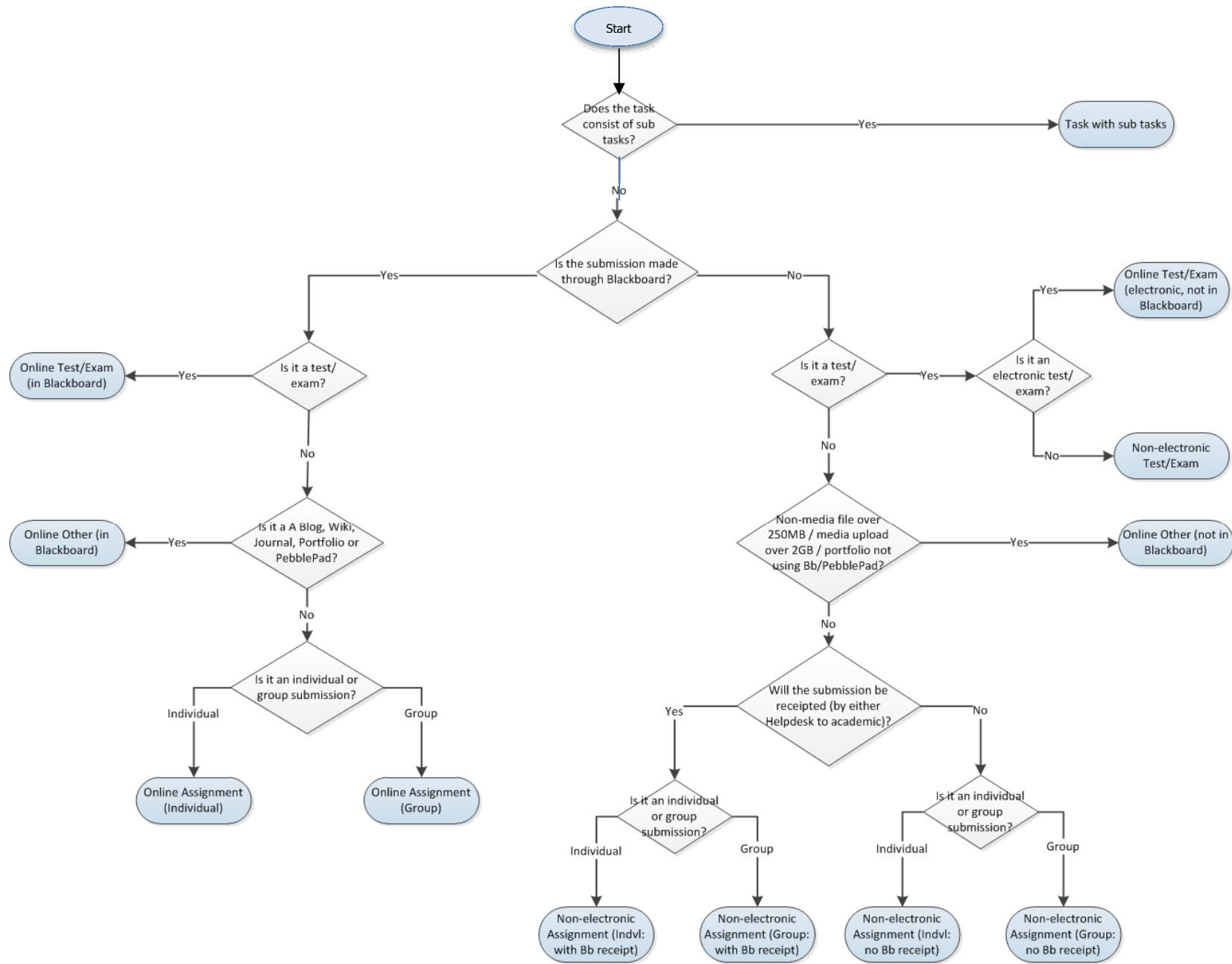


Figure 1